

Read these instructions before installation and retain for future reference. This equipment should be installed by a competent electrician 

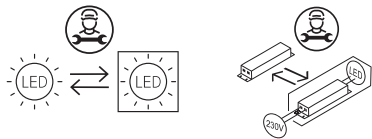
Important Information

We recommend that luminaires are installed by a qualified electrician ensuring the installation complies with current IEE wiring regulations BS7671:2018 & local building control.

- All tests should be carried out in accordance to EN 50172:2004.
- BELL will not accept responsibility for any claims arising from poor installation.

Important User Advice

- The ambient room temperature should not exceed 35°C.
- Ensure that there is adequate free air ventilation around the fitting.
- Always switch off mains supply before installing.

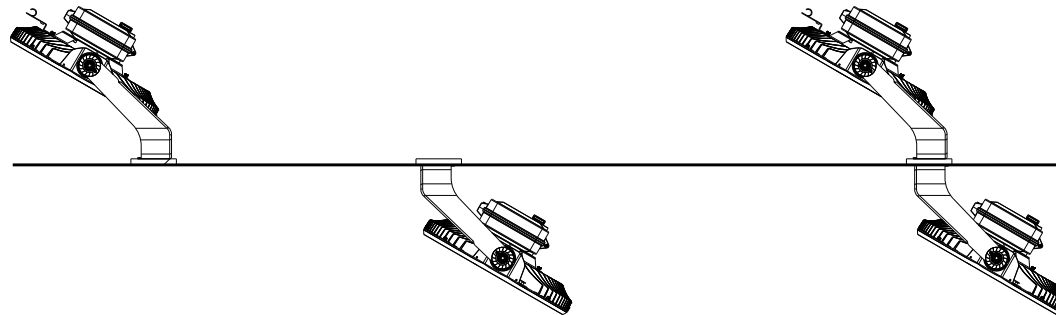


This product may contain substances that can be hazardous to the environment if not disposed of properly. Electrical and electronic equipment should never be disposed of with general household waste but must be separated for its correct treatment and recovery.

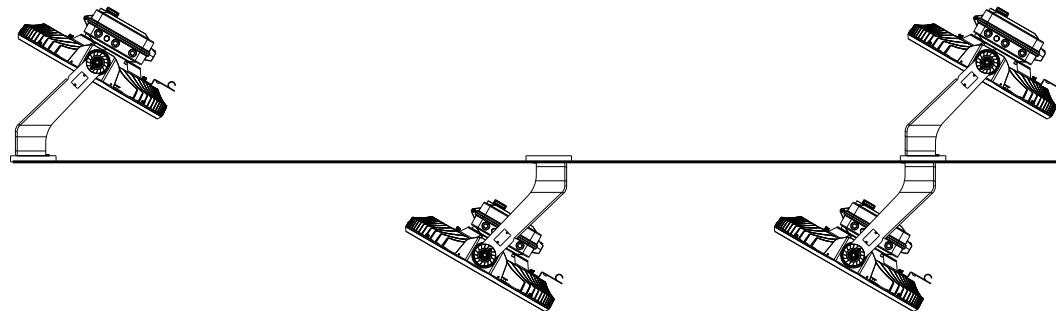
Where possible recycle your packaging.



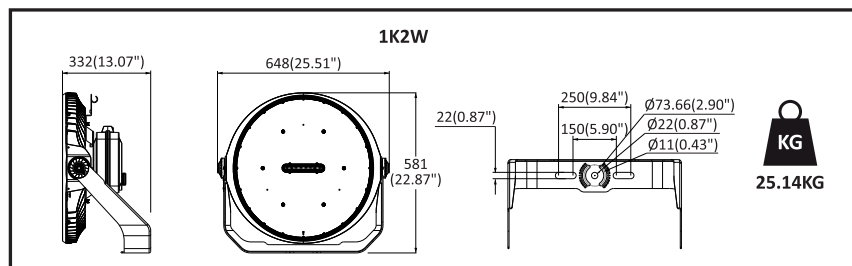
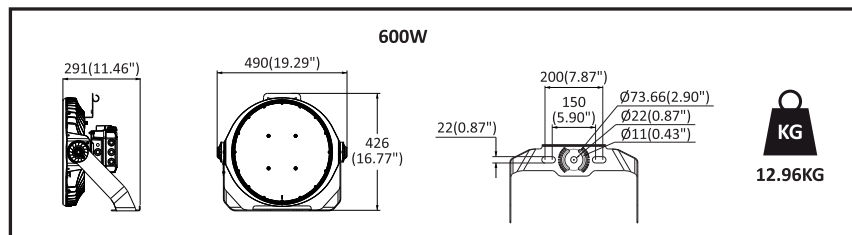
POSITIONS ALLOWED







POSITIONS NOT ALLOWED



Read these instructions before installation and retain for future reference. This equipment should be installed by a competent electrician 

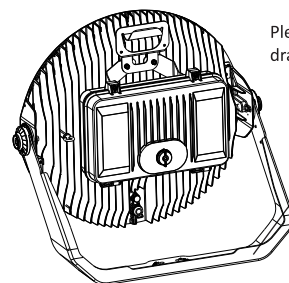


Luminaire Windage Area(SCx)

				
Power	ScX20°*	ScX40°*	ScX60°*	ScX80°*
600W	0.097m ² (1.046ft ²)	0.131m ² (1.408ft ²)	0.174m ² (1.873ft ²)	0.227m ² (2.441ft ²)
1200W	0.155m ² (1.666ft ²)	0.167m ² (1.795ft ²)	0.228m ² (2.454ft ²)	0.305m ² (3.281ft ²)

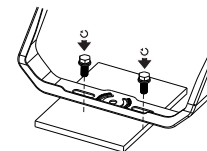
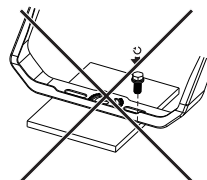
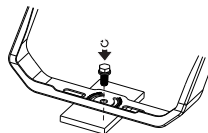
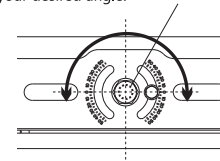
* These data refer to the worst case at indicated angle

OVERSLUNG INSTALLATION



Please refer to the dimension drawing for the bracket size.

Please take these two screws as the center and adjust the angle according to the scale to your desired angle.



1xM20 with extra large washer(not provided)

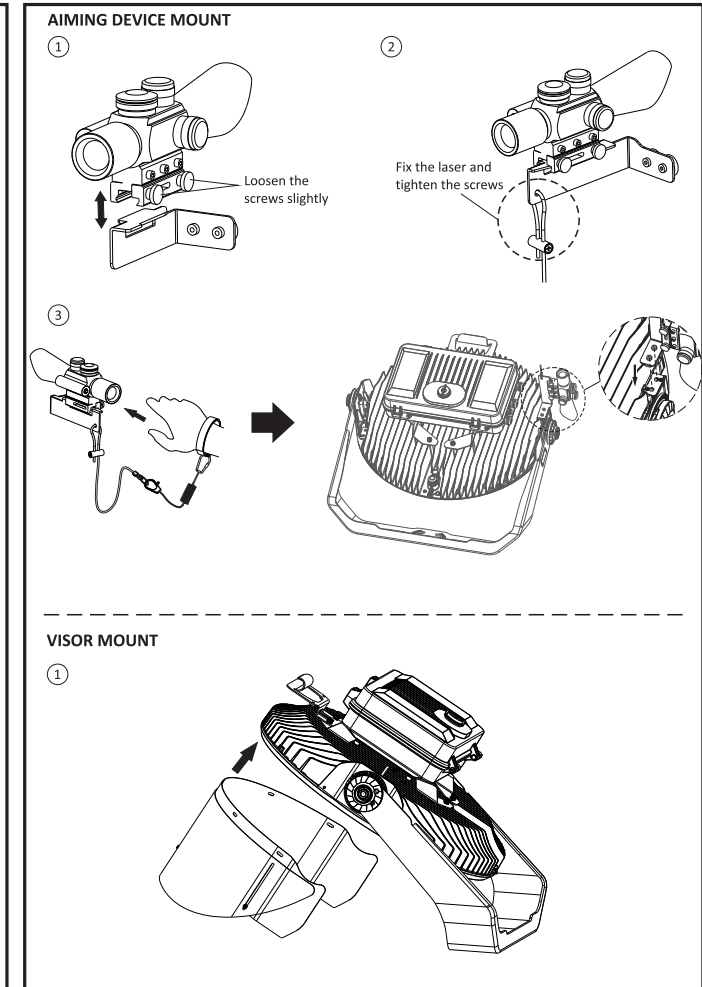
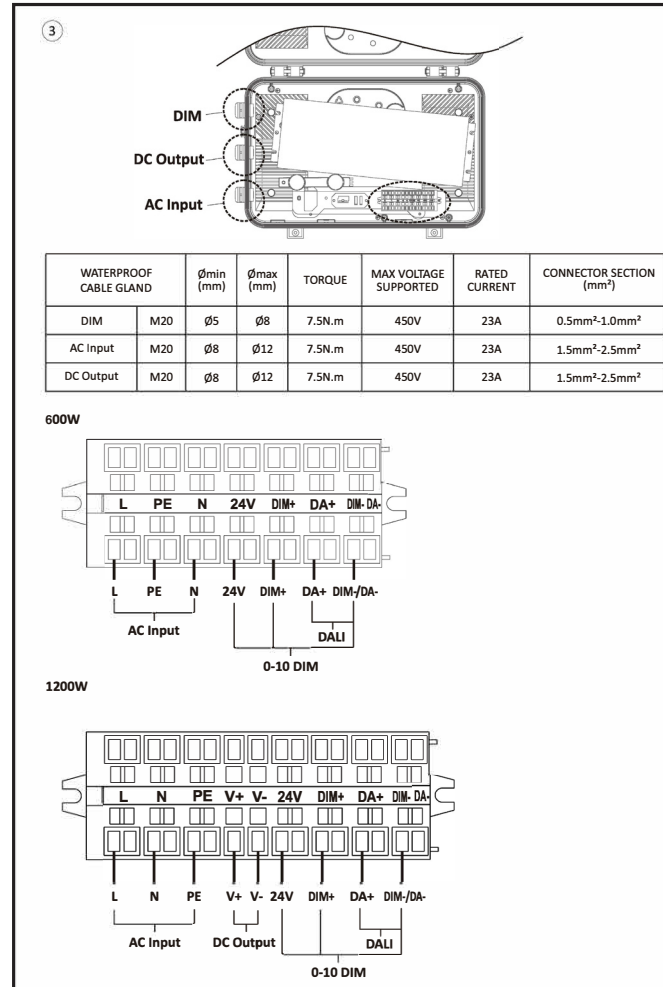
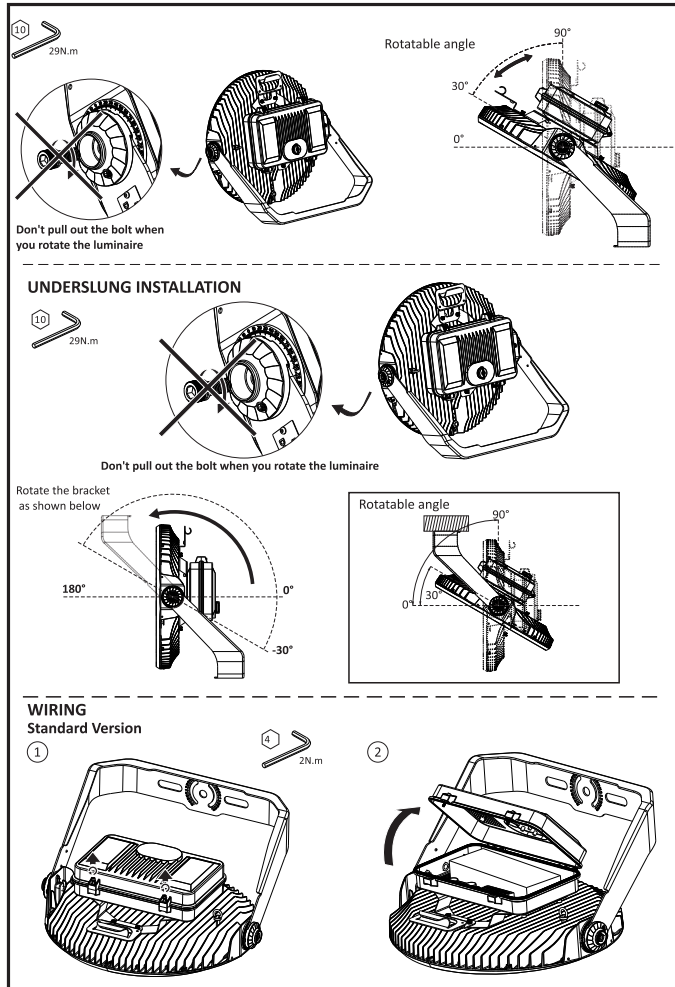


2xM20 with extra large washer(not provided)



In case of using only one fixation point and if the luminaire is higher >3m, the use of a 2nd fixing security system is needed.

Read these instructions before installation and retain for future reference. This equipment should be installed by a competent electrician



Read these instructions before installation and retain for future reference. This equipment should be installed by a competent electrician

